

## (H)GW9A-12 Outdoor High-Voltage AC Disconnecter



### 1 Overview

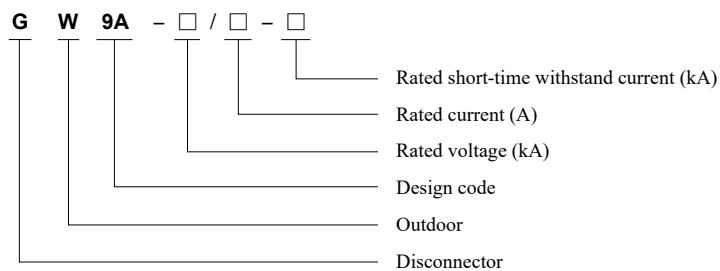
#### 1.1 Application:

(H) GW9A-12 outdoor high-voltage single-pole disconnecter (hereinafter referred to as disconnecter) is a three-phase AC 50Hz high-voltage power distribution device with the rated voltage 12kV, suitable for 10kV power supply system for cutting off and closing the high-voltage line with voltage under non-load and for electrical isolation of the electrical devices under repair such as high-voltage bus and circuit breaker from the live high-voltage line. It is also used to turn on/off a very small capacitive current and inductive current.

#### 1.2 Standard:

GB/T 1985-2014 High-voltage alternating-current disconnectors and earthing switches  
 GB/T 11022-2011 Common specifications for high-voltage switchgear and controlgear standard

### 2 Type Designation



### 3 Technical Parameters

No.	Name		Unit	Value
1	Rated voltage			12
2	Rated insulation level	Power frequency withstand voltage (1min)	kV	Phase to phase, phase to earth 42, open contacts 49
		Rated lightning impulse withstand voltage (peak)		Phase to phase, phase to earth 75, open contacts 85
3	Rated frequency		Hz	50
4	Rated current		A	630, 1250
5	Rated short-time withstand current		kA	20, 25
6	Rated peak withstand current			50, 63
7	Rated short-time duration		s	4
8	Mechanical life		Times	3,000
9	Rated closed loop breaking current		A	630

## (H)GW9A-12 Outdoor High-Voltage AC Disconnecter

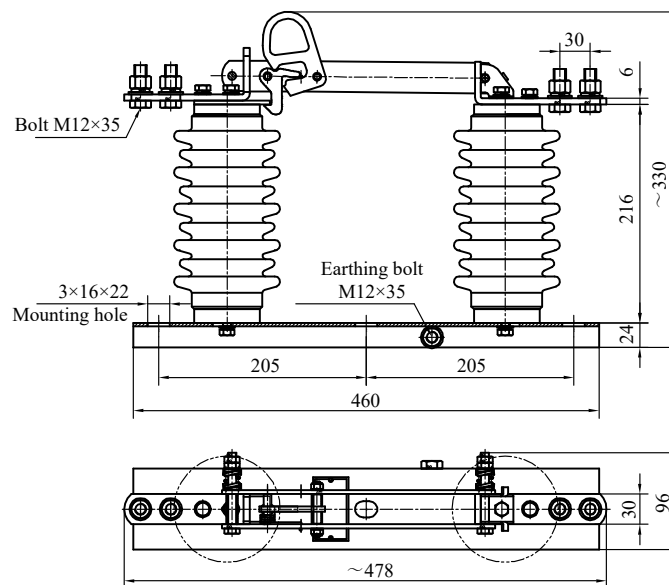
### 4 Operating Conditions

- 4.1 Ambient air temperature: Max. temperature is +45°C, Min. temperature is -40°C, and the max. daily temperature difference up to 25K.
- 4.2 Relative humidity: The daily mean is not greater than 95%, and the monthly mean is not greater than 90%.
- 4.3 Altitude: Not exceed 3000 m.
- 4.4 Wind speed: Not exceed 35 m/s.
- 4.5 Pollution degree: 4 .
- 4.6 Icing thickness: 10 mm.
- 4.7 Seismic intensity should not exceed 8 magnitude scales.
- 4.8 There is no frequent violent vibration at the installation site.
- 4.9 There is no obvious pollutions such as dust, smoke, corrosive gas, or salt spray in the ambient air.

Please contact the manufacturer if the product works out of the normal working condition range.

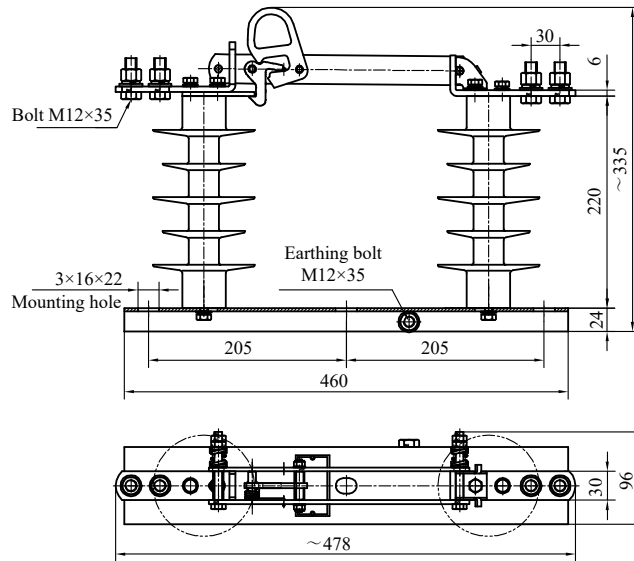
### 5 Outline and Installation Dimensions

- 5.1 630A outdoor high-voltage AC disconnecter



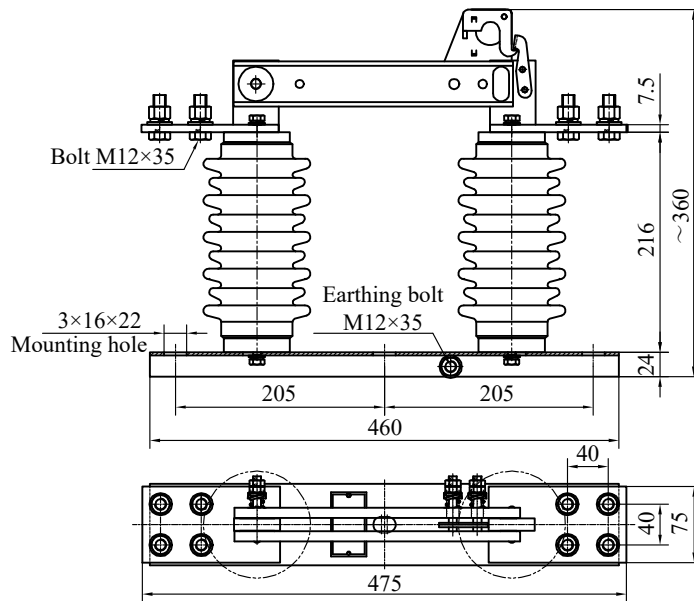
GW9A-12/630

## (H)GW9A-12 Outdoor High-Voltage AC Disconnect



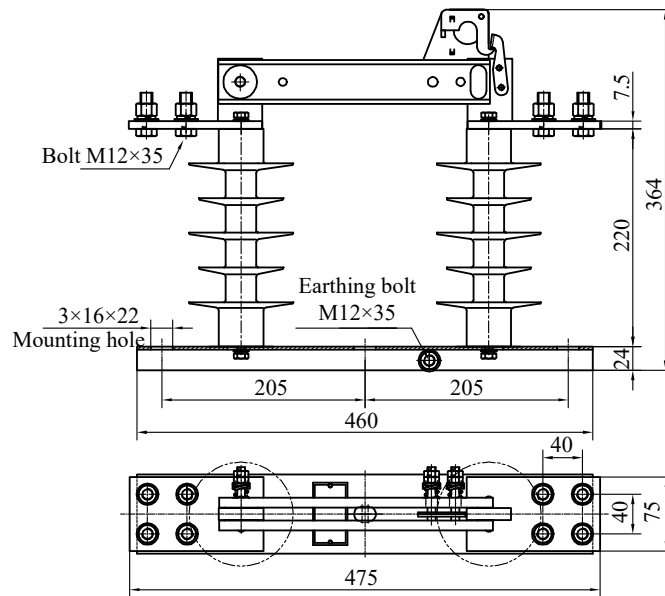
HGW9A-12/630

### 5.2 1250A outdoor high-voltage AC disconnect



GW9A-12/1250

## (H)GW9A-12 Outdoor High-Voltage AC Disconnect



HGW9A-12/1250

### 5.3 Installation diagram (for reference only)

